

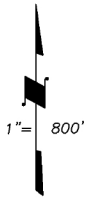
COUNTY ASSESSOR'S PARCEL MAP

SEC. 12, PTN. 11 T.8N., R.6W., M.D.B.&M.

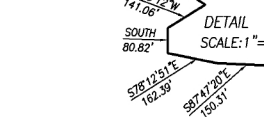
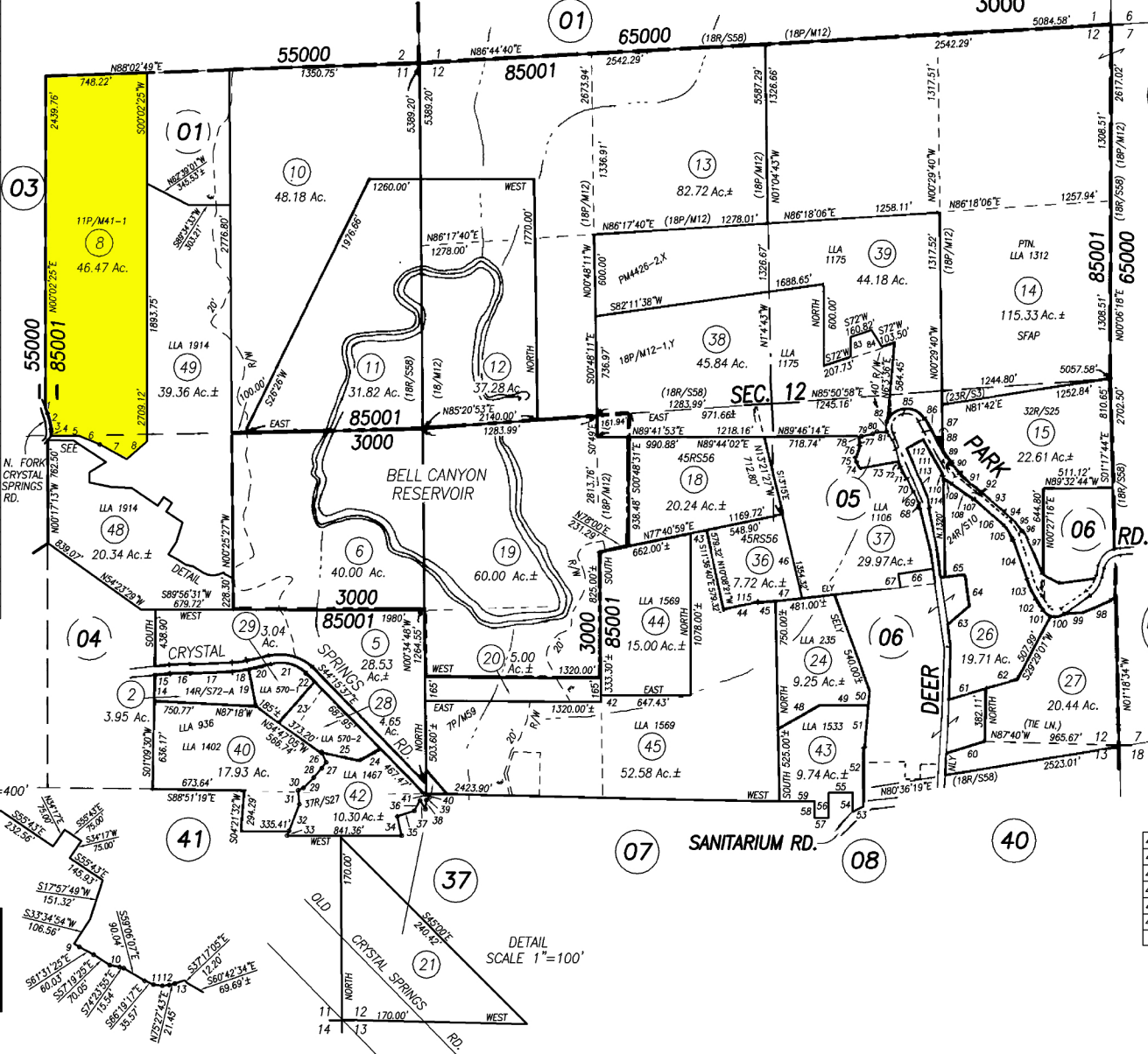
Tax Area Code
85001
3000

21-42

PTN. 21-01



1.	N19°28'58"W	44.16'	61.	S73°56'21"W	279.16'
2.	R=528'	L=118.99'	62.	S72°32'11"W	238.71'
3.	N06°34'17"W	17.38'	63.	N48°44'E	214.00'
4.	R=128'	L=27.71'	64.	N07°16'W	230.00'
5.	N08°09'W	207.76'	65.	S83°04'W	167.00'
6.	N67°33'23"W	161.09'	66.	N80°00'30"E 32R/S75	240.00'
7.	N63°04'51"W	224.37'	67.	N1°12'00'30"E 32R/S75	100.00'
8.	S54°55'39"W	200.22'	68.	S75°25'26"E	38.93'
9.	S58°20'08"E	23.09'	69.	S74°12'16"E	99.25'
10.	S78°21'48"E	37.21'	70.	S24°45'33"E	100.05'
11.	S83°11'16"E	32.63'	71.	S25°54'36"E	100.12'
12.	N83°52'24"E	25.21'	72.	N73°29'E	37.53'
13.	N71°37'03"E	38.57'	73.	S79°28'W	318.83'
14.	S01°09'30'W	198.51'	74.	N06°44'30'W	53.35'
15.	S83°57'30'W	119.39'	75.	N02°55'30'E	57.20'
16.	R=1020'	L=144.41'	76.	N16°41'30'E	70.35'
17.	S88°09'30'W	307.94'	77.	N05°54'W	98.43'
18.	R=530'	L=117.79'	78.	N89°44'56"E	1.50'
19.	N11°46'55'W	289.10'	79.	N77°23'E	83.07'
20.	S75°25'30'W	159.35'	80.	N61°38'E	33.75'
21.	R=270'	L=284.26'	81.	N88°38'W	71.79'
22.	N44°15'10'W	88.02'	82.	R=145'	L=73.79'
23.	S41°00'43'W	395.95'	83.	SOUTH	143.30'
24.	N80°00'53'E	172.07'	84.	N31°52'30'W	140.38'
25.	S71°14'16'E	293.20'	85.	R=145'	L=339.71'
26.	N24°11'W	130.61'	86.	N29°59'55'W	162.55'
27.	N06°36'40'E	54.66'	87.	S01°14'33'E	351.08'
28.	N04°40'E	92.00'	88.	S88°44'03'W	60.42'
29.	N44°50'E	105.00'	89.	S29°59'55'E	116.24'
30.	N64°10'E	43.68'	90.	S42°52'27'E	92.80'
31.	N05°02'45'W	101.76'	91.	S49°55'22'E	211.81'
32.	N21°16'E	210.68'	92.	N40°03'15'E	50.00'
33.	N21°16'E	37.20'	93.	S49°58'10'E	219.37'
34.	S12°30'E	144.61'	94.	S41°44'37'E	65.95'
35.	S71°54'50'W	130.61'	95.	R=484.19'	L=107.60'
36.	S29°21'16'W	87.90'	96.	S50°33'41'E	60.63'
37.	N32°00'W	74.56'	97.	S22°43'12'E	327.53'
38.	S05°34'31'W	66.98'	98.	S66°37'47'W	206.51'
39.	S48°21'36'W	30.60'	99.	S84°39'28'W	160.58'
40.	S44°15'10'E	27.20'	100.	R=109.48'	L=60.00'±
41.	S88°51'19'E	13.19'	101.	R=109.48'	L=117.35'±
42.	NORTH	52.64'	102.	N32°23'32'W	104.07'
43.	N78°00'E	157.33'	103.	R=620'	L=156.76'
44.	N72°30'20'E	281.17'	104.	N1°25'41'19'W	303.13'
45.	N89°25'40'E	130.00'±	105.	R=255'	L=138.97'
46.	S13°21'27'E	650.79'	106.	N48°07'46'W	292.75'
47.	N89°06'01'W	330.00'	107.	S45°52'14'W	7.00'
48.	S60°30'W	375.00'±	108.	N51°44'27'W	178.49'
49.	WEST	330.00'	109.	N59°14'02'W	85.39'
50.	S05°05'13'W	703.09'	110.	S01°11'37'E	13.71'
51.	N05°05'13'E	404.89'	111.	S30°08'52'E	313.35'
52.	NORTH	350.04'	112.	N81°11'16'E	129.31'
53.	R=370'	L=92.00'±	113.	N22°29'35'W	414.82'
54.	NORTH	143.24'	114.	N06°38'13'W	97.98'
55.	EAST	177.00'	115.	S78°01'39'W	261.17'
56.	NORTH	183.00'			
57.	EAST	104.00'			
58.	SOUTH	722.00'			
59.	EAST	259.00'			
60.	N73°29'E	320.46'			



NOTE: This Map Was Prepared For Assessment Purposes Only, No Liability Is Assumed For The Accuracy Of The Data Delineated Hereon.

420-42 LLA	9-6-06
420-43 LLA	6-14-07
420-44 & 45 LLA	5-20-08
420-46 & 47 LLA	12-31-15
420-18 & 36 RS	5-25-16
420-48 & 49 LLA	10-4-17
REVISION	DATE

1962

21-42