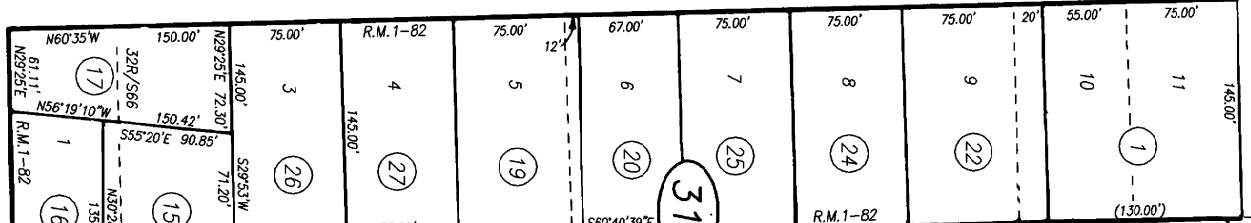


AVE.

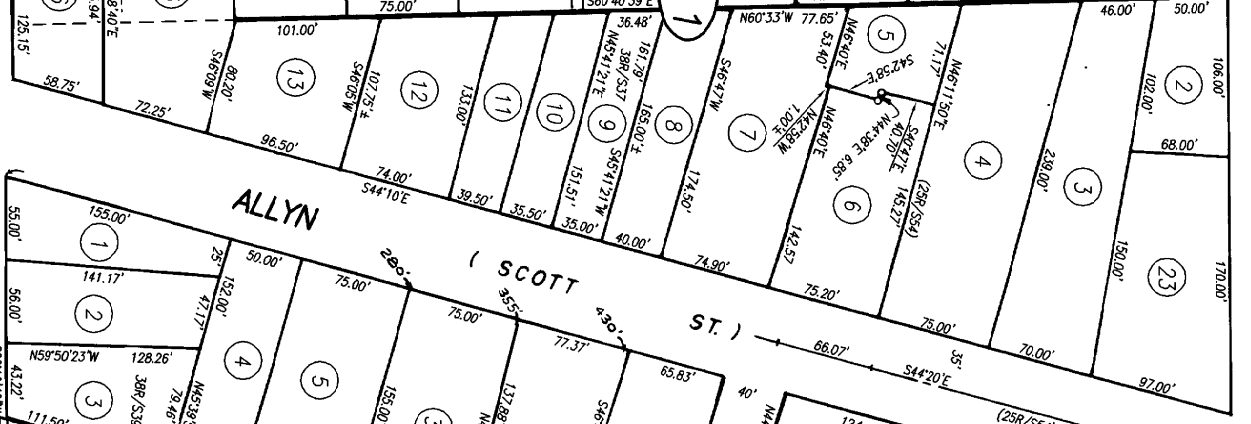
HUDSON



ADAMS

38° 30'

AVE.

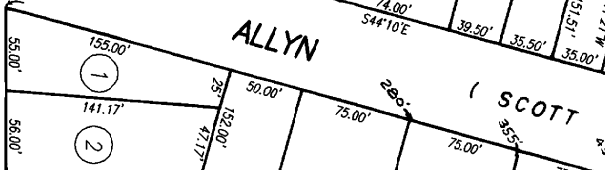


30

ST.

POR. RANCHO CARNE HUMANA
R.M. Bk D of Patents, Pg. 127

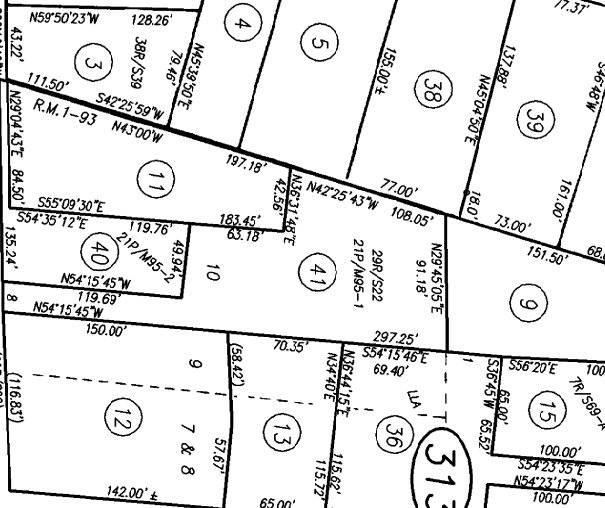
Tax Area Code
3002



ALLYN

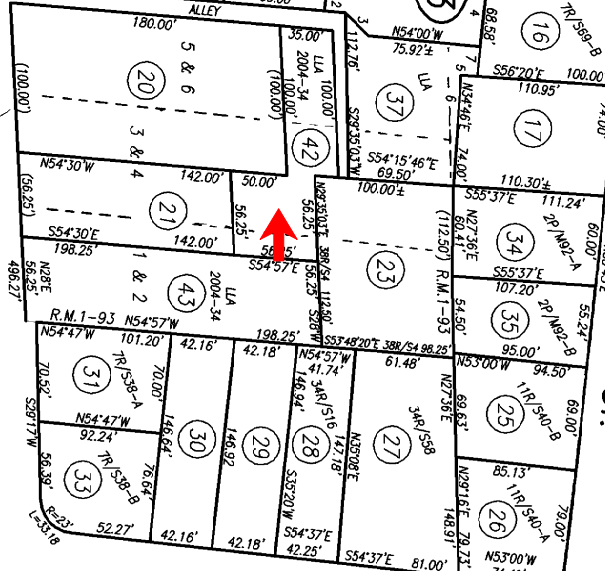
SCOTT

ST.)



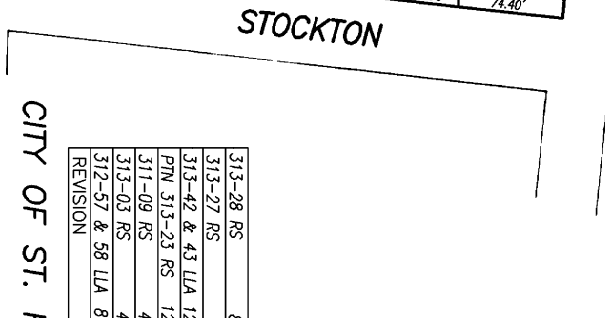
313

TANTER



ST.

23



STOCKTON

ST.

32

HASTIE'S ADD'N,
FEALEY'S ADD'N,

R.M. Bk. 1, Pg. 82
R.M. Bk. 1, Pg. 93

60

ST.

59

Assessor's Map Bk.

County of Napa

1954-60-

CITY OF ST. H

313-28 RS	8
313-27 RS	8
313-42 & 43 LLA 12	12
PIN 313-23 RS 12	12
311-09 RS	4
313-03 RS	4
312-57 & 58 LLA 8-	8
REVISION	

1.	S54°06'25"
2.	N57°15'48"
3.	N13°33'W
4.	S36°45'W
5.	S54°22'21"
6.	N35°20'32"
7.	N36°45'E
8.	N29°35'03"
9.	N42°34'30"
10.	N64°16'59"
11.	R=10°
12.	
13.	N41°35'10"
14.	R=10°
15.	N42°08'02"
16.	R=10°
17.	N45°40'W
18.	N42°34'30"
19.	S60°10'E
20.	S29°44'W
21.	N42°34'30"