

# COUNTY ASSESSOR'S PARCEL MAP

## PTN. YAJOME RANCHO

### PTN. SEC. 10, T. 6N., R. 4 W., M. D. B. & M.

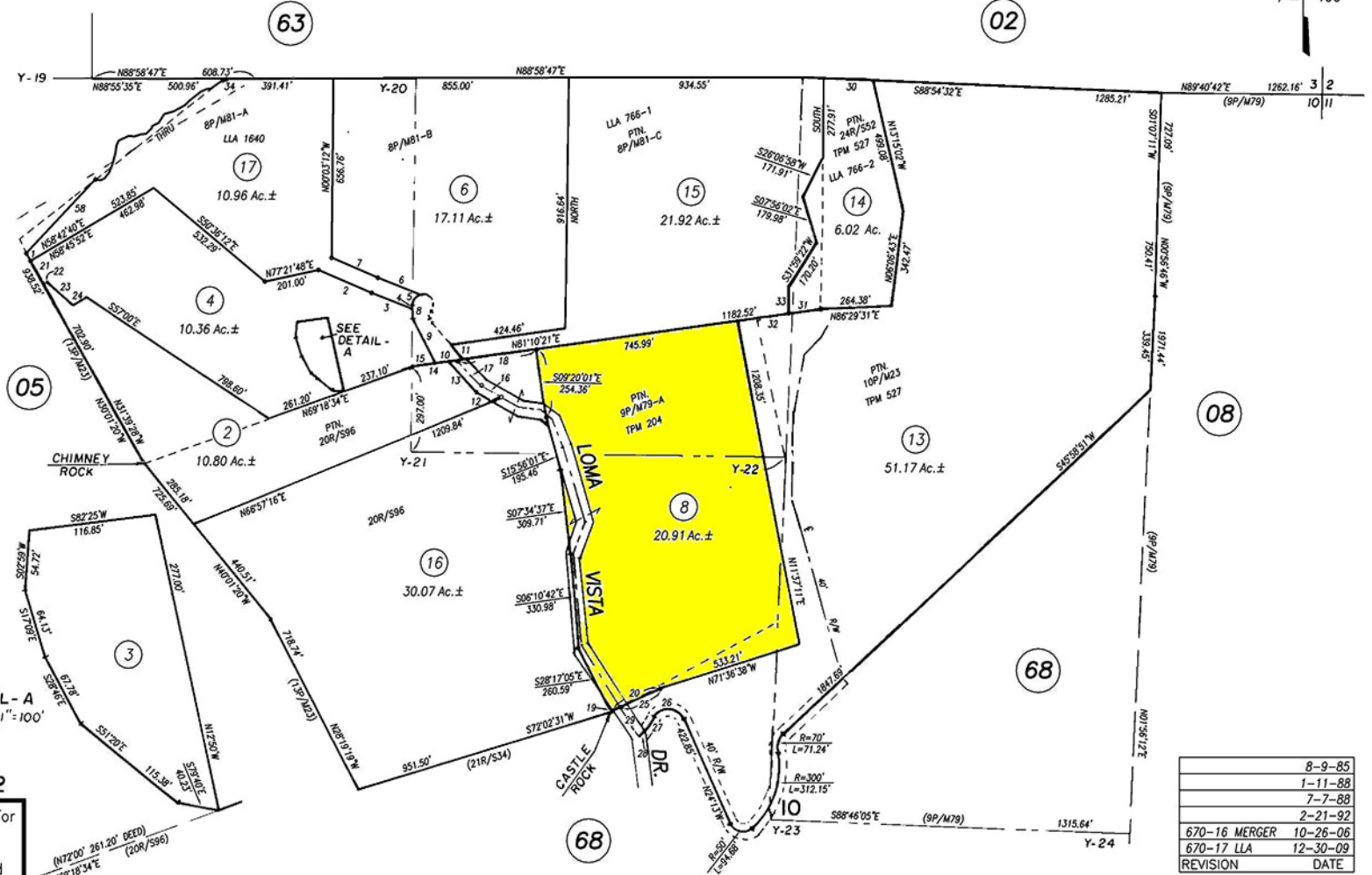
Tax Area Code  
72076

39-67

PTN. 39-05

1" = 400'

1.	S30°01'20"E	32.07'
2.	S67°17'04"E	211.69'
3.	S69°02'07"E	172.18'
4.	R=20'	L=1.67'
5.	R=36'	L=69.10'
6.	N89°02'07"W	171.33'
7.	N67°17'04"W	184.85'
8.	SOUTH	20.00'
9.	S27°47'50"E	188.60'
10.	N81°10'21"E	83.64'
11.	N40°08'55"W	70.24'
12.	N63°42'W	85.96'
13.	N44°25'W	131.80'
14.	N81°10'21"E	157.15'
15.	N81°10'21"E	97.14'
16.	N63°42'W	85.96'
17.	N44°25'W	131.80'
18.	N81°10'21"E	300.23'
19.	S22°53'26"E	14.91'
20.	S65°02'43"W	191.81'
21.	S30°30'E	107.00'
22.	N50°00'E	27.00'
23.	S49°30'E	122.00'
24.	N58°00'E	56.00'
25.	N65°02'43"E	154.36'
26.	R=60'	L=129.50'
27.	S32°07'W	81.80'
28.	S44°42'W	28.56'
29.	N33°52'35"W	128.56'
30.	N88°54'32"E	185.82'
31.	N81°02'20"E	141.72'
32.	N81°10'21"E	90.29'
33.	N00°28'50"W	113.56'
34.	S71°17'58"W	133.33'
35.	S55°43'40"W	53.10'
36.	S78°55'17"W	18.38'
37.	S63°42'56"W	21.41'
38.	S51°18'49"W	48.88'
39.	S44°49'34"W	30.06'
40.	S82°12'57"W	45.42'
41.	S72°50'30"W	36.15'
42.	S30°39'42"W	36.85'
43.	S62°39'28"W	27.29'
44.	S19°03'12"W	8.97'
45.	S44°22'36"W	27.69'
46.	S81°34'23"W	20.45'
47.	S73°04'41"W	26.89'
48.	N73°14'35"W	8.11'
49.	N89°24'12"W	10.12'
50.	S84°34'44"W	40.54'
51.	S23°31'17"W	18.10'
52.	S06°52'21"W	27.23'
53.	S14°03'19"W	42.41'
54.	S21°24'47"W	32.33'
55.	S36°07'38"W	28.47'
56.	S69°19'32"W	18.03'
57.	N81°04'46"W	16.46'
58.	S42°31'41"W	370.66'



DETAIL - A  
SCALE: 1" = 100'

Assessor of Napa County 1982

NOTE: This Map Was Prepared For Assessment Purposes Only , No Liability Is Assumed For The Accuracy Of The Data Delineated Hereon.

8-9-85
1-11-88
7-7-88
2-21-92
670-16 MERGER 10-26-06
670-17 LLA 12-30-09
REVISION DATE