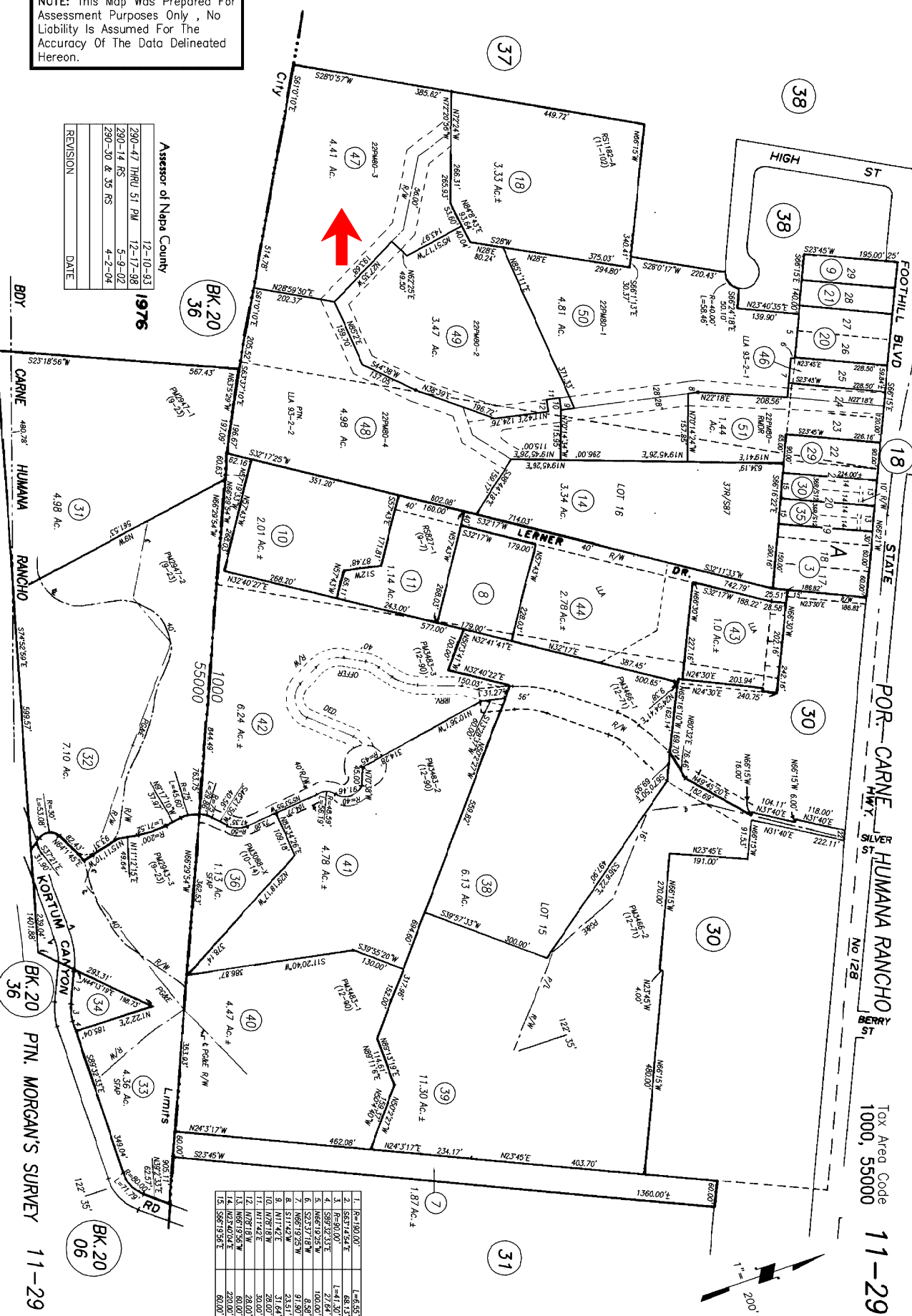


NOTE: This Map Was Prepared For Assessment Purposes Only, No Liability Is Assumed For The Accuracy Of The Data Delineated Hereon.

Assessor of Napa County	12-10-93	1976
290-47 THRU 51 PM	12-17-98	
290-14 RS	5-9-02	
290-30 & 35 RS	4-2-04	
REVISION		
DATE		



1. R=180.00'	L=6.53'
2. S85°17'54"E	68.13'
3. R=90.00'	L=41.30'
4. S89°32'33"E	27.64'
5. S86°19'25"W	108.00'
6. N86°19'25"W	91.80'
7. N86°19'25"W	23.51'
8. S11°42'W	31.84'
9. N11°42'E	28.00'
10. N87°18'W	28.00'
11. N11°42'E	28.00'
12. N87°18'W	28.00'
13. N87°18'W	22.00'
14. N87°18'W	22.00'
15. S86°19'25"E	60.00'

BK. 20 36
 PTN. MORGAN'S SURVEY 11-29
 BK. 20 06

Tox Area Code 11-29
 1000, 55000

