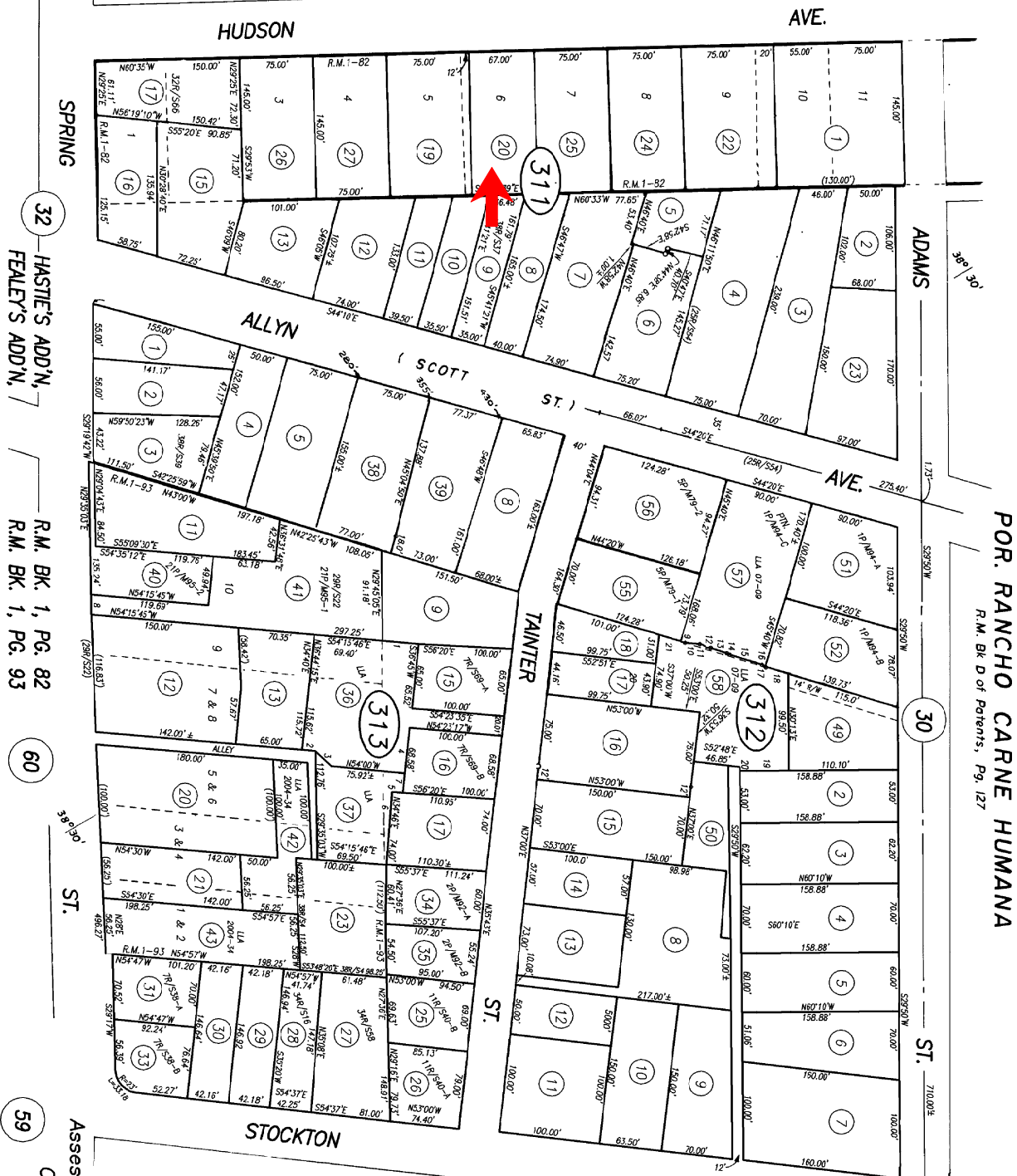


NOTE: This Map Was Prepared For Assessment Purposes Only , No Liability Is Assumed For The Accuracy Of The Data Delineated Hereon.



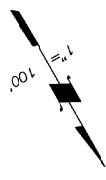
POR. RANCHO CARNE HUMANA
R.M. Bk D of Patents, Pg. 127

HASTIE'S ADD'N,
FEALEY'S ADD'N,
R.M. BK. 1, PG. 82
R.M. BK. 1, PG. 93

Assessor's Map Bk. 9 Pg. 31
County of Napa, Calif.
1954-60-61

Tox Area Code
3002

9-31



1.	S54°08'25"E	36.86'
2.	N64°15'48"W	13.71'
3.	N13°33'W	21.57'
4.	S56°45'W	44.42'
5.	S54°22'21"E	10.77'
6.	N35°20'32"E	23.51'
7.	N35°45'E	24.16'
8.	N29°33'03"E	20.12'
9.	N42°34'30"W	4.10'E
10.	N41°16'58"W	15.18'
11.	R=10'	L=4.70'
12.	N41°35'10"W	16.89'
13.	R=10'	L=4.23'
14.	R=10'	L=4.23'
15.	N42°08'02"W	34.48'
16.	R=10'	L=4.23'
17.	N45°40'W	4.4'E
18.	N42°34'30"W	26.00'E
19.	S60°10'E	48.76'
20.	S29°44'W	3.75'
21.	N42°34'30"W	26.10'E

313-28 RS	8-15-01
313-27 RS	1-3-02
313-42 & 43 ULA	12-20-04
PNL 313-23 RS	12-29-06
311-09 RS	4-18-07
313-03 RS	4-18-07
312-57 & 58 ULA	8-15-07
REVISION	DATE