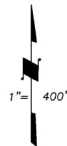


COUNTY ASSESSOR'S PARCEL MAP

PTN. SEC. 29 & 30, T. 7N., R. 4W., M.D.B. & M.

Tax Area Code
72076

32-07



BK. 31
17

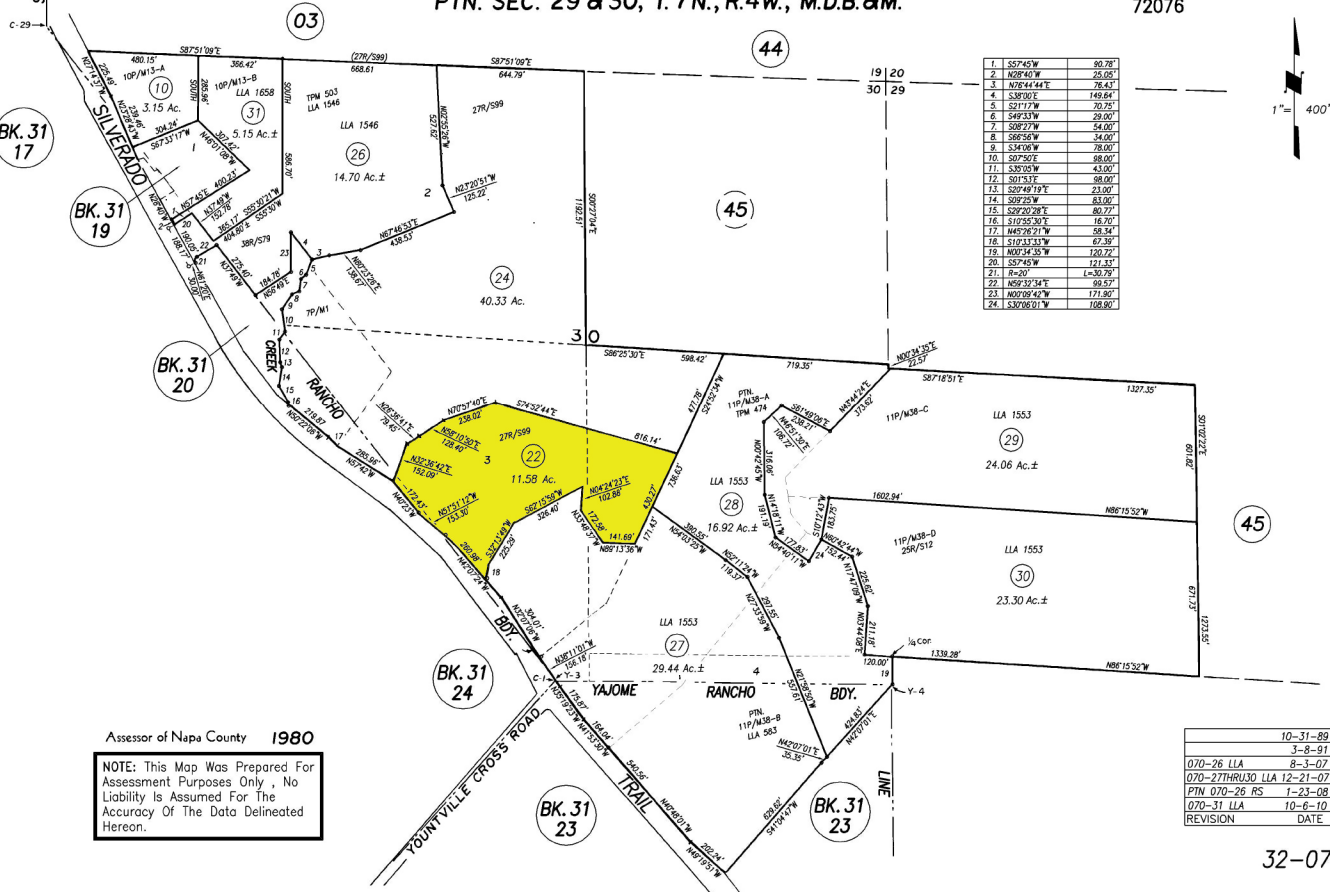
BK. 31
19

BK. 31
20

BK. 31
24

BK. 31
23

BK. 31
23



1	S27°45'W	80.78'
2	N02°46'W	25.05'
3	N02°44'44"E	26.43'
4	S38°30'E	149.84'
5	S11°17'W	70.75'
6	S49°33'W	29.00'
7	S08°27'W	54.00'
8	S08°56'W	54.00'
9	S34°06'W	26.00'
10	S07°50'E	88.00'
11	S30°56'W	43.00'
12	S01°31'E	98.00'
13	S03°49'19"E	23.00'
14	S02°25'W	83.00'
15	S02°02'28"E	80.77'
16	S19°55'30"E	16.70'
17	N42°26'21"W	58.74'
18	S10°33'53"W	67.30'
19	N03°44'35'W	120.72'
20	S57°45'W	121.11'
21	R=20°	L=30.79'
22	N59°52'34"E	89.57'
23	N03°09'42"W	171.80'
24	S30°06'01'W	106.80'

Assessor of Napa County 1980

NOTE: This Map Was Prepared For Assessment Purposes Only , No Liability is Assumed For The Accuracy Of The Data Delineated Hereon.

10-31-89
3-8-91
070-26 LLA 8-3-07
070-27THRU30 LLA 12-21-07
PTN 070-26 RS 1-23-08
070-31 LLA 10-6-10
REVISION DATE

32-07